

Performance

Lifting height — on tyres	10290.0 mm
Rated capacity	3500 kg
Capacity (at max. height on tyres)	2500 kg
Capacity (at max. reach on tyres)	600 kg
Max. reach on tyres	6886.0 mm

Weights

Weight (unladen)	7340 kg
------------------	---------

Traction

Standard tyres	SOLIDEAL 405/70-20 14PR
1st gear / low range	7.0 km/h
1st gear / high range	26.0 km/h

Drive System

Transmission	Hydrostatic with electronic regulation
Main drive	Hydrostatic motor

Engine

Make / Model	Perkins / 1104D-44TA
Fuel	Diesel
Cooling	Water
Rated power (ISO 14396)	100.0 HP
Rated power (ISO 14396)	74.5 kW
Maximum torque at 1400 RPM	410.0 Nm
Number of cylinders	4
Displacement	4.40 L

Hydraulic System

Pump type	Gear pump with LS valve
Pump capacity	100.00 L/min
Relief valve pressure setting	250.00 bar

Cycle Times

Lift time - no load	11.0 s
Lower time - no load	6.0 s
Telescope in time at max. reach - no load	7.0 s
Telescope in time at max. height - no load	7.0 s
Telescope out time at max. reach - no load	11.5 s
Telescope out time at max. height - no load	11.5 s

Brakes

Engine braking	Hydrostatic
Parking and emergency brake	Passive brake

Fluid Capacities

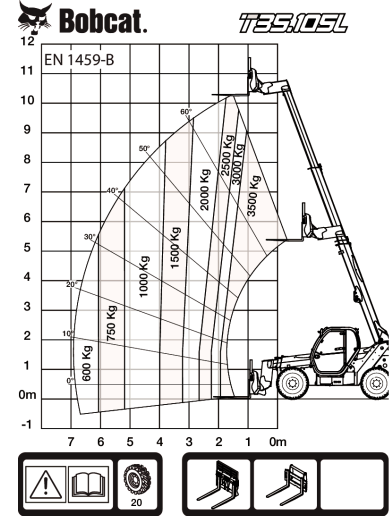
Fuel tank	130.00 L
Hydraulic reservoir	71.00 L

Environmental

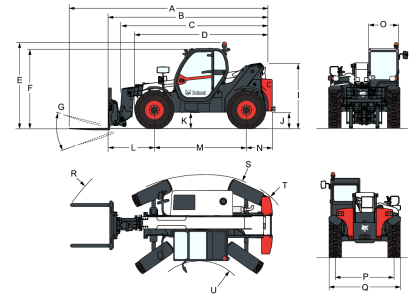
Whole body vibration (EN 13059)	0.90 ms ⁻²
---------------------------------	-----------------------

Load Charts

With forks and standard 405/70x20 tyres


Options

Air conditioning	Boom wiring harness and electric connectors
Boom stop	Keyless ignition (start/stop with keypad)
Custom colour	Standard engine ignition (with key) with additional keypad security
Fire extinguisher	High comfort air suspension seat
Forward/Reverse control on Steering Wheel Lever (no longer on joystick)	Rotating tow hitch (including rear electric socket)
Lockable fuel cap	Basic option tyres - set of 4 x 400/80-24"
Loudspeaker & radio ready	Basic tow hitch
PVC Document holder	Michelin tyres - set of 4 x 400/80-24" 162A8 IND TL POWER CL
Pintle tow hitch (including rear electric socket)	Pallet forks 1200mm length / Floating / 1,44m carriage / Forks included / Backrest included / For Quicktach tool carrier
Protective grill for windshield (front and roof)	Pallet forks 1200mm length / Rigid frame / Forks included / Backrest included / For Quicktach tool carrier
Rear Flat Mirror	Dunlop tyres - set of 4 x 405/70-20" SPT9 MPT (SEMI INDUSTRIAL)
Roof window wiper	Dunlop tyres - set of 4 x 405/70-24" SPT9 MPT (SEMI INDUSTRIAL)
Sun visor	Fan inverter with manual and auto modes
Support for vehicle registration plate	Quicktach carriage with hydraulic attachment lock (boom wiring harness mandatory)
Wheel wedge	Cold start
Work lights on boom	Cyclonic air prefilter
Remote control system with on-board charger	

Dimensions


(-)	857.0 mm	(L)	1422.0 mm
(A)	6276.0 mm	(M)	2850.0 mm
(B)	5071.0 mm	(N)	799.0 mm
(C)	4936.0 mm	(O)	930.0 mm
(D)	4192.0 mm	(P)	1862.0 mm
(E)	2584.0 mm	(Q)	2264.0 mm
(F)	2445.0 mm	(R)	5025.0 mm
(G)	143.0°	(R)	5116.0 mm
(I)	1941.0 mm	(S)	3765.0 mm
(J)	415.0 mm	(U)	1245.0 mm