

Performance

| | |
|---------------------------|------------|
| Lifting height | 10290.0 mm |
| Rated capacity | 3500 kg |
| Capacity (at max. height) | 2500 kg |
| Capacity (at max. reach) | 600 kg |
| Max. reach | 6886.0 mm |
| Crowding force | 7800 daN |

Weights

| | |
|------------------|---------|
| Weight (unladen) | 7420 kg |
|------------------|---------|

Traction

| | |
|-----------------------|-------------------------|
| Standard tyres | SOLIDEAL 405/70-20 14PR |
| 1st gear / low range | 8.5 km/h |
| 2nd gear / high range | 30.0 km/h |

Drive System

| | |
|--------------|--|
| Transmission | Hydrostatic with electronic regulation |
| Main drive | Hydrostatic motor |

Engine

| | |
|--|------------------|
| Make / Model | Deutz TCD 3.6 L4 |
| Fuel | Diesel |
| Cooling | Liquid |
| Rated power (ISO 14396:2002) at 2300 RPM | 100.0 HP |
| Rated power (ISO 14396:2002) at 2300 RPM | 74.4 kW |
| Maximum torque at 1400 RPM | 410.0 Nm |
| Number of cylinders | 4 |
| Displacement | 3.62 L |

Hydraulic System

| | |
|-------------------------------|-------------------------|
| Pump type | Gear pump with LS valve |
| Pump capacity | 100.00 L/min |
| Relief valve pressure setting | 255.00 bar |

Cycle Times

| | |
|---|--------|
| Lift time - no load | 9.8 s |
| Lower time - no load | 6.0 s |
| Telescope in time at max. reach - no load | 7.0 s |
| Telescope in time at max. height - no load | 7.0 s |
| Telescope out time at max. reach - no load | 10.4 s |
| Telescope out time at max. height - no load | 10.4 s |

Brakes

| | |
|-----------------------------|---------------------------------------|
| Engine braking | Hydrostatic |
| Parking and emergency brake | Negative brake with hydraulic command |

Fluid Capacities

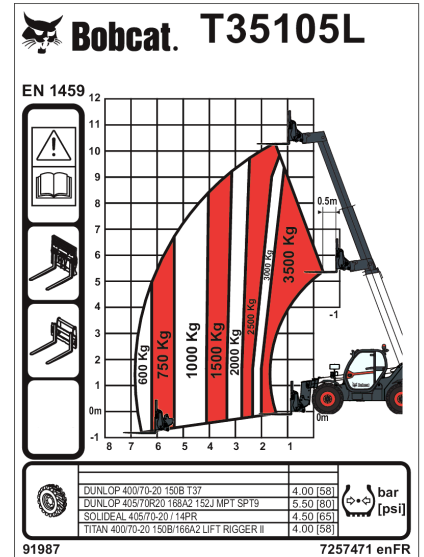
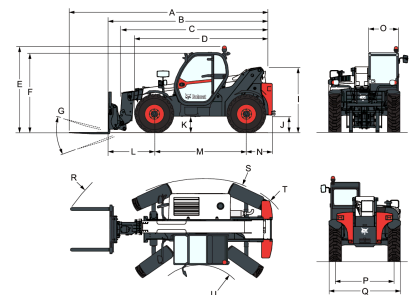
| | |
|---------------------|----------|
| Fuel tank | 130.00 L |
| Hydraulic reservoir | 71.00 L |

Environmental

| | |
|---------------------------------------|-----------------------|
| Operator noise level (LpA) (EN 12053) | 76 dB(A) |
| Level of acoustic power (LWA) | 106 dB(A) |
| Whole body vibration (EN 13059) | 0.90 ms ⁻² |

Load Charts

With forks and standard 405/70x20 tyres


Dimensions


| | |
|---------------|---------------|
| (-) 857.0 mm | (L) 1422.0 mm |
| (A) 6276.0 mm | (M) 2850.0 mm |
| (B) 5071.0 mm | (N) 799.0 mm |
| (C) 4936.0 mm | (O) 930.0 mm |
| (D) 4192.0 mm | (P) 1862.0 mm |
| (E) 2584.0 mm | (Q) 2264.0 mm |
| (F) 2389.0 mm | (R) 5025.0 mm |
| (G) 143.0° | (R) 5116.0 mm |
| (I) 1941.0 mm | (S) 3765.0 mm |
| (J) 415.0 mm | (U) 1245.0 mm |