

Performance

| | |
|--|------------|
| Lifting height — on stabilisers | 17466.0 mm |
| Lifting height — on tyres | 16200.0 mm |
| Rated capacity | 4000 kg |
| Capacity (at max. height on stabilisers) | 2500 kg |
| Capacity (at max. height on tyres) | 1000 kg |
| Capacity (at max. reach on stabilisers) | 500 kg |
| Max. reach on tyres | 12800.0 mm |

Weights

| | |
|------------------|----------|
| Weight (unladen) | 10650 kg |
|------------------|----------|

Traction

| | |
|-----------------------|---------------------------|
| Standard tyres | DUNLOP 400/80-24 156B T37 |
| 1st gear / low range | 8.5 km/h |
| 1st gear / high range | 30.0 km/h |

Drive System

| | |
|--------------|--|
| Transmission | Hydrostatic with electronic regulation |
| Main drive | Hydrostatic motor |

Engine

| | |
|--|------------|
| Make / Model | Bobcat D34 |
| Fuel | Diesel |
| Cooling | Coolant |
| Rated power (ISO 14396:2002) at 2400 RPM | 100.0 HP |
| Rated power (ISO 14396:2002) at 2400 RPM | 74.5 kW |
| Maximum torque at 1400 RPM | 430.0 Nm |
| Number of cylinders | 4 |
| Displacement | 3.40 L |

*Stage IIIB Bobcat D34 also available in 55kW/75HP version (without SCR/Ad-Blue after-treatment)

Hydraulic System

| | |
|-------------------------------|-------------------------|
| Pump type | Gear pump with LS valve |
| Pump capacity | 100.00 L/min |
| Relief valve pressure setting | 250.00 bar |

Cycle Times

| | |
|---|--------|
| Lift time - no load | 14.0 s |
| Lower time - no load | 8.5 s |
| Telescope in time at max. reach - no load | 20.5 s |
| Telescope in time at max. height - no load | 18.0 s |
| Telescope out time at max. reach - no load | 31.5 s |
| Telescope out time at max. height - no load | 31.5 s |

Brakes

| | |
|-----------------------------|---------------|
| Engine braking | Hydrostatic |
| Parking and emergency brake | Passive brake |

Fluid Capacities

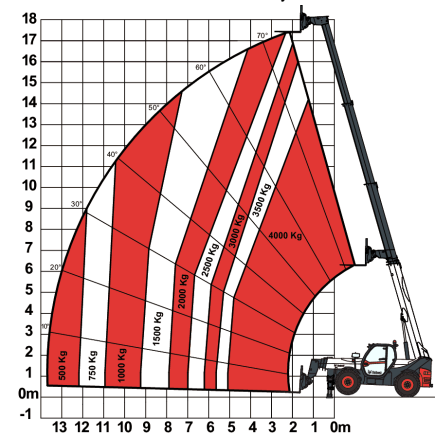
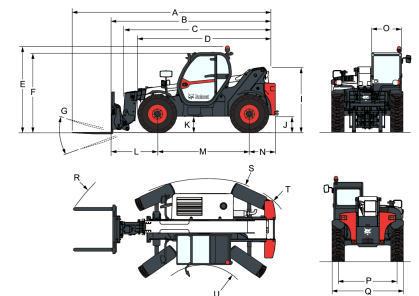
| | |
|---------------------|----------|
| Fuel tank | 145.00 L |
| Hydraulic reservoir | 76.00 L |

Environmental

| | |
|---------------------------------------|-----------------------|
| Operator noise level (LpA) (EN 12053) | 78 dB(A) |
| Level of acoustic power (LWA) | 106 dB(A) |
| Whole body vibration (EN 13059) | 1.20 ms ⁻² |

Load Charts

With forks and standard 400/80x24 tyres, on stabilisers


Dimensions


| | |
|---------------|---------------|
| (-) 857.0 mm | (L) 2263.0 mm |
| (A) 7425.0 mm | (M) 2850.0 mm |
| (B) 6220.0 mm | (N) 1107.0 mm |
| (C) 5821.0 mm | (O) 930.0 mm |
| (D) 4573.0 mm | (P) 1992.0 mm |
| (E) 2673.0 mm | (Q) 2418.0 mm |
| (F) 2536.0 mm | (R) 5840.0 mm |
| (G) 124.0° | (S) 4150.0 mm |
| (I) 1956.0 mm | (U) 1519.0 mm |
| (J) 509.0 mm | |