

**Performance**

Lifting height — on tyres	7505.0 mm
Rated capacity	4300 kg
Capacity (at max. height on tyres)	1800 kg
Capacity (at max. reach on tyres)	1600 kg
Max. reach on tyres	4022.0 mm

**Weights**

Weight (unladen)	7855 kg
------------------	---------

**Traction**

Standard tyres	Alliance 460/70R24
1st gear / low range	6.0 km/h
1st gear / high range	12.0 km/h
2nd gear / low range	18.0 km/h
2nd gear / high range	40.0 km/h

**Drive System**

Transmission	Hydrostatic with electronic regulation
Main drive	Hydrostatic motor + 2 speed gearbox

**Engine**

Make / Model	PERKINS / 1104D-E44TA
Fuel	Diesel
Rated power (ISO 14396)	96.5 kW
Maximum torque at 1400 RPM	516.0 Nm
Number of cylinders	4
Displacement	4.40 L

**Hydraulic System**

Pump type	LS piston pump
Pump capacity	190.00 L/min
Relief valve pressure setting	255.00 bar

**Cycle Times**

Lift time - no load	6.5 s
Lower time - no load	5.0 s
Telescope in time at max. reach - no load	5.0 s
Telescope in time at max. height - no load	5.0 s
Telescope out time at max. reach - no load	4.5 s
Telescope out time at max. height - no load	4.3 s

**Brakes**

Engine braking	Hydrostatic
Parking and emergency brake	Passive brake

**Fluid Capacities**

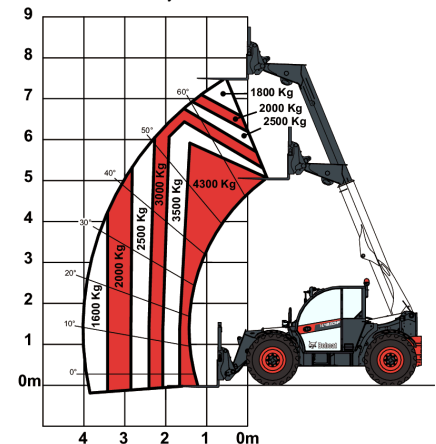
Fuel tank	138.00 L
Hydraulic reservoir	59.00 L

**Environmental**

Operator noise level (LpA) (EN 12053)	73 dB(A)
---------------------------------------	----------

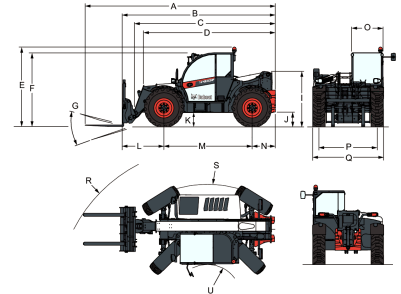
**Load Charts**

With forks on 24 inch tyres


**Options**

Air conditioning	Manitou carriage with manual attachment lock
Boom stop	Basic option lock
Custom colour	Basic option tyres - set of 4 x 400/80-24"
Fire extinguisher	Blue lights for henhouses
Forward/Reverse control on Steering Wheel Lever (no longer on joystick)	Boom suspension
Lockable fuel cap	Dunlop tyres - set of 4 x 405/70-20" SPT9 MPT (SEMI INDUSTRIAL)
Loudspeaker & radio ready	Dunlop tyres - set of 4 x 405/70-24" SPT9 MPT (SEMI INDUSTRIAL)
PVC Document holder	Forward/Reverse control on joystick and steering wheel
Pintle tow hitch (including rear electric socket)	Front tow hitch
Protective grill for windshield (front and roof)	Fan inverter with manual & auto modes
Rear Flat Mirror	Rear auxiliary line
Roof window wiper	Rotating tow hitch with height adjustment (auto-lock/German style) (including rear electric socket)
Sun visor	Rotating tow hitch with height adjustment (manual locking) (including rear electric socket)
Support for vehicle registration plate	Trailer brake valve (not available for Germany & Italy)
Wheel wedge	Transmission 40km/h (max speed with 24" tyres)
Work lights on boom	Cyclonic air prefilter
Basic tow hitch	Michelin tyres - set of 4 x 460/70R24" XMCL (AGRICULTURAL)
High comfort air suspension seat	Michelin tyres - set of 4 x 500/70R24" XMCL (AGRICULTURAL) (Except overseas countries - Container shipping)
Keyless ignition (start/stop with keypad)	Nokian recycling tyres - set of 4 x 480/65R24" TRI STEEL (RECYCLING)
Michelin tyres - set of 4 x 400/80-24" 162A8 IND TL POWER CL	Arm rest
Quicktach carriage with hydraulic attachment lock (boom wiring harness mandatory)	Boom wiring harness and electric connectors
Rotating tow hitch (including rear electric socket)	Tool box
Standard engine ignition (with key) with additional keypad security	Hydraulic pick-up tow hitch (including rear electric socket) (rear flat mirror mandatory)
Manitou carriage with hydraulic attachment lock (boom wiring harness mandatory)	Alliance tyres - set of 4 x 460/70R24" (AGRICULTURAL) (Except

overseas countries by  
container shipping)

**Dimensions**


(-)	900.0 mm	(L)	1352.0 mm
(A)	6180.0 mm	(M)	2870.0 mm
(B)	4975.0 mm	(N)	754.0 mm
(C)	4585.0 mm	(O)	1013.0 mm
(D)	4256.0 mm	(P)	1895.0 mm
(E)	2561.0 mm	(Q)	2300.0 mm
(F)	2374.0 mm	(R)	4883.0 mm
(G)	152.0°	(R)	4962.0 mm
(I)	1770.0 mm	(S)	3714.0 mm
(J)	430.0 mm	(U)	1092.0 mm