

Performance

Lifting height — on tyres	7505.0 mm
Rated capacity	4300 kg
Capacity (at max. height on tyres)	1800 kg
Capacity (at max. reach on tyres)	1600 kg
Max. reach on tyres	4022.0 mm

Weights

Weight (unladen)	7855 kg
------------------	---------

Traction

Standard tyres	CAMSO 400/80-24 / 20PR TM R4
1st gear / low range (40 km/h option)	6 (6) km/h
1st gear / high range (40 km/h option)	11 (12) km/h
2nd gear / low range (40 km/h option)	16 (18) km/h
2nd gear / high range (40 km/h option)	30 (40) km/h

Drive System

Transmission	Hydrostatic with electronic regulation
Main drive	Hydrostatic motor + 2 speed gearbox

Engine

Make / Model	PERKINS / 1104D-E44TA
Fuel	Diesel
Rated power (ISO 14396)	96.5 kW
Maximum torque at 1400 RPM	516.0 Nm
Number of cylinders	4
Displacement	4.40 L

Hydraulic System

Pump type	LS piston pump
Pump capacity	190.00 L/min
Relief valve pressure setting	255.00 bar

Cycle Times

Lift time - no load	6.5 s
Lower time - no load	5.0 s
Telescope in time at max. reach - no load	5.0 s
Telescope in time at max. height - no load	5.0 s
Telescope out time at max. reach - no load	4.5 s
Telescope out time at max. height - no load	4.3 s

Brakes

Engine braking	Hydrostatic
Parking and emergency brake	Passive brake

Fluid Capacities

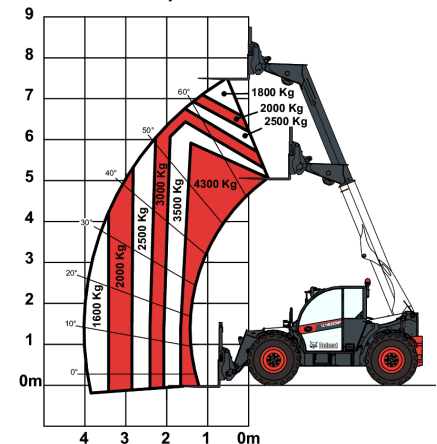
Fuel tank	138.00 L
Hydraulic reservoir	59.00 L

Environmental

Operator noise level (LpA) (EN 12053)	73 dB(A)
---------------------------------------	----------

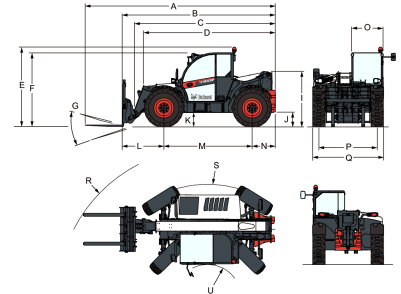
Load Charts

With forks on 24 inch tyres


Options

Air conditioning	Manitou carriage with manual attachment lock
Boom stop	Basic option tyres - set of 4 x 400/80-24"
Custom colour	Blue lights for henhouses
Fire extinguisher	Boom suspension
Forward/Reverse control on Steering Wheel Lever (no longer on joystick)	Dunlop tyres - set of 4 x 405/70-20" SPT9 MPT (SEMI INDUSTRIAL)
Lockable fuel cap	Dunlop tyres - set of 4 x 405/70-24" SPT9 MPT (SEMI INDUSTRIAL)
Loudspeaker & radio ready	Forward/Reverse control on joystick and steering wheel
PVC Document holder	Front tow hitch
Pintle tow hitch (including rear electric socket)	Fan inverter with manual & auto modes
Protective grill for windshield (front and roof)	Rear auxiliary line
Rear Flat Mirror	Rotating tow hitch with height adjustment (auto-lock/German style) (including rear electric socket)
Roof window wiper	Rotating tow hitch with height adjustment (manual locking) (including rear electric socket)
Sun visor	Trailer brake valve (not available for Germany & Italy)
Support for vehicle registration plate	Transmission 40km/h (max speed with 24" tyres)
Wheel wedge	Cyclonic air prefilter
Work lights on boom	Michelin tyres - set of 4 x 460/70R24" XMCL (AGRICULTURAL)
Basic tow hitch	Michelin tyres - set of 4 x 500/70R24" XMCL (AGRICULTURAL) (Except overseas countries - Container shipping)
High comfort air suspension seat	Nokian recycling tyres - set of 4 x 480/65R24" TRI STEEL (RECYCLING)
Keyless ignition (start/stop with keypad)	Arm rest
Michelin tyres - set of 4 x 400/80-24" 162A8 IND TL POWER CL	Boom wiring harness and electric connectors
Quicktach carriage with hydraulic attachment lock (boom wiring harness mandatory)	Tool box
Rotating tow hitch (including rear electric socket)	Hydraulic pick-up tow hitch (including rear electric socket) (rear flat mirror mandatory)
Standard engine ignition (with key) with additional keypad security	Alliance tyres - set of 4 x 460/70R24" (AGRICULTURAL) (Except
Manitou carriage with hydraulic attachment lock (boom wiring harness mandatory)	

overseas countries by
container shipping)

Dimensions


(-)	900.0 mm	(L)	1352.0 mm
(A)	6180.0 mm	(M)	2870.0 mm
(B)	4975.0 mm	(N)	754.0 mm
(C)	4585.0 mm	(O)	1013.0 mm
(D)	4256.0 mm	(P)	1895.0 mm
(E)	2561.0 mm	(Q)	2300.0 mm
(F)	2424.0 mm	(R)	4883.0 mm
(G)	152.0°	(R)	4962.0 mm
(I)	1770.0 mm	(S)	3714.0 mm
(J)	430.0 mm	(U)	1092.0 mm