

# TL43.80HF IV | Telescopic Specifications

## Performance

Lifting height — on tyres	7505.0 mm
Rated capacity	4300 kg
Capacity (at max. height on tyres)	1800 kg
Capacity (at max. reach on tyres)	1600 kg
Max. reach on tyres	4022.0 mm

## Weights

Weight (unladen)	8040 kg
------------------	---------

## Traction

Standard tyres	CAMSO 400/80-24 / 20PR TM R4
1st gear / low range (40 km/h option)	6 (6) km/h
1st gear / high range (40 km/h option)	11 (12) km/h
2nd gear / low range (40 km/h option)	16 (18) km/h
2nd gear / high range (40 km/h option)	30 (40) km/h

## Drive System

Transmission	Hydrostatic with electronic regulation
Main drive	Hydrostatic motor + 2 speed gearbox

## Engine

Make / Model	Bobcat D34
Fuel	Diesel
Cooling	Coolant
Rated power (ISO 14396)	130.0 HP
Rated power (ISO 14396)	97.0 kW
Maximum torque at 1400 RPM	500.0 Nm
Number of cylinders	4
Displacement	3.40 L

## Hydraulic System

Pump type	LS piston pump with electric displacement limiter
Pump capacity	190.00 L/min
Relief valve pressure setting	255.00 bar

## Cycle Times

Lift time - no load	6.5 s
Lower time - no load	5.0 s
Telescope in time at max. reach - no load	5.0 s
Telescope in time at max. height - no load	5.0 s
Telescope out time at max. reach - no load	4.5 s
Telescope out time at max. height - no load	4.3 s

## Brakes

Engine braking	Hydrostatic
Parking and emergency brake	Passive brake

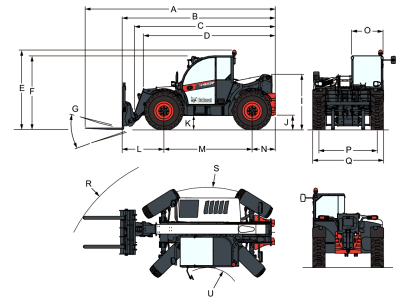
## Fluid Capacities

Fuel tank	138.00 L
Hydraulic reservoir	59.00 L

## Environmental

Operator noise level (LpA) (EN 12053)	73 dB(A)
Level of acoustic power (LWA)	107 dB(A)
Whole body vibration (EN 13059)	1.10 ms <sup>-2</sup>

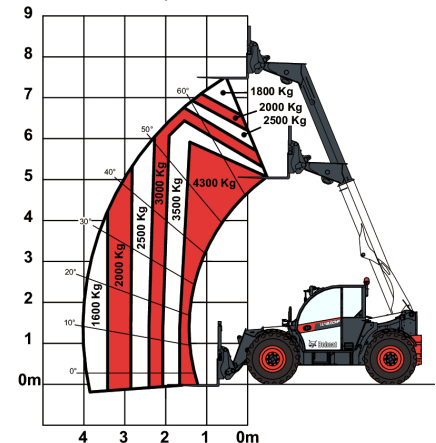
## Dimensions



(-) 900.0 mm	(L) 1352.0 mm
(A) 6180.0 mm	(M) 2870.0 mm
(B) 4975.0 mm	(N) 754.0 mm
(C) 4585.0 mm	(O) 1013.0 mm
(D) 4256.0 mm	(P) 1895.0 mm
(E) 2561.0 mm	(Q) 2300.0 mm
(F) 2424.0 mm	(R) 4883.0 mm
(G) 152.0°	(S) 3714.0 mm
(I) 1770.0 mm	(U) 1092.0 mm

## Load Charts

With forks on 24 inch tyres



## Options

Air conditioning	Manitou carriage with manual attachment lock
Boom stop	Basic option tyres - set of 4 x 400/80-24"
Custom colour	Blue lights for henhouses
Fire extinguisher	Boom suspension
Forward/Reverse control on Steering Wheel Lever (no longer on joystick)	Dunlop tyres - set of 4 x 405/70-20" SPT9 MPT (SEMI INDUSTRIAL)
Lockable fuel cap	Dunlop tyres - set of 4 x 405/70-24" SPT9 MPT (SEMI INDUSTRIAL)
Loudspeaker & radio ready	Forward/Reverse control on joystick and steering wheel
PVC Document holder	Front tow hitch
Pintle tow hitch (including rear electric socket)	Fan inverter with manual & auto modes
Protective grill for windshield (front and roof)	Rear auxiliary line
Rear Flat Mirror	Rotating tow hitch with height adjustment (auto-lock/German style) (including rear electric socket)
Roof window wiper	Rotating tow hitch with height adjustment (manual locking) (including rear electric socket)
Sun visor	
Support for vehicle registration plate	
Wheel wedge	
Work lights on boom	
Basic tow hitch	
High comfort air suspension seat	
Keyless ignition (start/stop with keypad)	
Michelin tyres - set of 4 x 400/80-24" 162A8 IND TL	
POWER CL	

Quicktach carriage with hydraulic attachment lock (boom wiring harness mandatory)	Trailer brake valve (not available for Germany & Italy)
Rotating tow hitch (including rear electric socket)	Transmission 40km/h (max speed with 24" tyres)
Standard engine ignition (with key) with additional keypad security	Michelin tyres - set of 4 x 460/70R24" XMCL (AGRICULTURAL)
Manitou carriage with hydraulic attachment lock (boom wiring harness mandatory)	Michelin tyres - set of 4 x 500/70R24" XMCL (AGRICULTURAL) (Except overseas countries - Container shipping)
	Nokian recycling tyres - set of 4 x 480/65R24" TRI STEEL (RECYCLING)
	Arm rest
	Boom wiring harness and electric connectors
	Tool box
	Hydraulic pick-up tow hitch (including rear electric socket) (rear flat mirror mandatory)
	Tractor homologation (mandatory options: rear tow hitch + rear electric socket, front tow hitch, support for vehicle registration plate)
	Alliance tyres - set of 4 x 460/70R24" (AGRICULTURAL) (Except overseas countries by container shipping)