

**Performance**

Lifting height — on stabilisers	15700.0 mm
Lifting height — on tyres	13800.0 mm
Rated capacity	3800 kg
Capacity (at max. height on stabilisers)	2000 kg
Capacity (at max. height on tyres)	600 kg
Capacity (at max. reach on stabilisers)	300 kg
Capacity (at max. reach on tyres)	300 kg
Max. reach on stabilisers	13350.0 mm
Max. reach on tyres	8100.0 mm

**Weights**

Weight (unladen)	13700 kg
------------------	----------

**Traction**

Standard tyres	400/70x20 inch
1st gear / low range	10.0 km/h
2nd gear / high range	26.0 km/h
Gradeability	22.0°

**Drive System**

Transmission	Hydrostatic with variable load sensing pump
Main drive	Servo-controlled 2-speed

**Engine**

Make / Model	Kubota / V38000DI-T-E3B
Fuel	Diesel
Cooling	Liquid
Rated power (DIN 6271) at 1900 RPM:	99.2 HP
Rated power (DIN 6271) at 1500 RPM:	74.0 kW
Maximum torque at 1500 RPM:	320.0 Nm
Number of cylinders	4
Displacement	3.70 L

**Hydraulic System**

Pump type	Gear pump
Working pressure	230.00 bar
Pump capacity	110.00 L/min
Relief valve pressure setting	230.00 bar

**Cycle Times**

Telescope in time at max. reach - no load	34.2 s
Telescope out time at max. reach - no load	21.9 s

**Brakes**

Engine braking	Hydrostatic
Parking and emergency brake	Negative brake with electro control on rear axle

**Fluid Capacities**

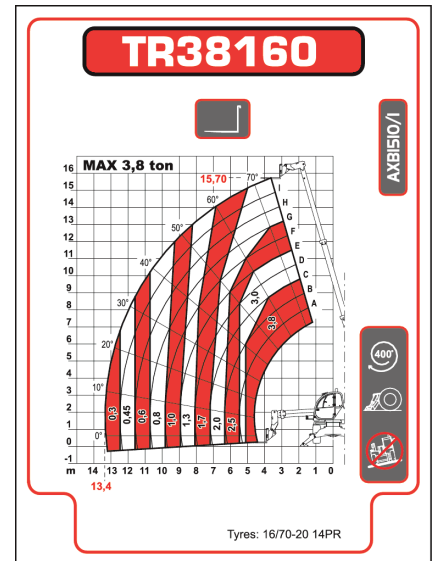
Engine oil	13.20 L
Fuel tank	180.00 L
Hydraulic reservoir	170.00 L

**Environmental**

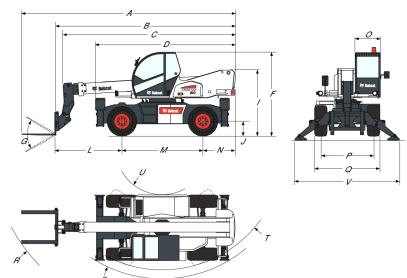
Operator noise level (LpA) (EN 12053)	103 dB(A)
Whole body vibration (ISO 2631-1)	1.50 ms <sup>-2</sup>
Hand-arm vibration (ISO 5349-1)	4.50 ms <sup>-2</sup>

**Load Charts**

On stabilisers, with forks, 90°


**Options**

Anti-theft immobiliser	Positive/negative jib ready (Not compatible w/remote control)
Carriage with hydraulic attachment lock (Compulsory w/count plate)	Protective grill for windshield (front and roof)
Centering handler ready (Not compatible w/hydraulic attachment lock)	Remote control
Custom colours (more than one colour)	Roof mounted work LED lights. Rear of cab (qty=2)
Custom colour (one colour)	Set of 400/70R20" tyres
Cold start (engine water heater)	Spare heavy duty wheel 20 in
Cold weather pre-arrangement	Spare wheel 20 in
LED Light on boom head	

**Dimensions**


(A)	7699.0 mm	(N)	1175.0 mm
(B)	6575.0 mm	(O)	980.0 mm
(C)	6290.0 mm	(P)	1920.0 mm
(D)	5116.0 mm	(Q)	2380.0 mm
(F)	3000.0 mm	(R)	5265.0 mm
(G)	130.0°	(S)	4750.0 mm
(I)	2380.0 mm	(T)	4430.0 mm
(J)	510.0 mm	(U)	1700.0 mm
(L)	2430.0 mm	(V)	3968.0 mm
(M)	2950.0 mm		