

Performance

Lifting height — on stabilisers	15700.0 mm
Lifting height — on tyres	13800.0 mm
Rated capacity	3800 kg
Capacity (at max. height on stabilisers)	2000 kg
Capacity (at max. height on tyres)	600 kg
Capacity (at max. reach on stabilisers)	300 kg
Capacity (at max. reach on tyres)	300 kg
Max. reach on stabilisers	13350.0 mm
Max. reach on tyres	8100.0 mm

Weights

Weight (unladen)	13700 kg
------------------	----------

Traction

Standard tyres	400/70x20 inch
1st gear / low range	10.0 km/h
2nd gear / high range	26.0 km/h
Gradeability	22.0°

Drive System

Transmission	Hydrostatic with variable load sensing pump
Main drive	Servo-controlled 2-speed

Engine

Make / Model	Kubota / V3800 CR-TI - Stage IIIB
Fuel	Diesel
Cooling	Liquid
Rated power (ISO 14396)	100.0 HP
Rated power (ISO 14396)	74.5 kW
Maximum torque at 1400 RPM	335.0 Nm
Number of cylinders	4
Displacement	3769 cm ³

Hydraulic System

Pump type	Gear pump
Working pressure	230.00 bar
Pump capacity	110.00 L/min
Relief valve pressure setting	230.00 bar

Cycle Times

Telescope in time at max. reach - no load	34.2 s
Telescope out time at max. reach - no load	21.9 s

Brakes

Engine braking	Hydrostatic
Parking and emergency brake	Negative brake with electro control on rear axle

Fluid Capacities

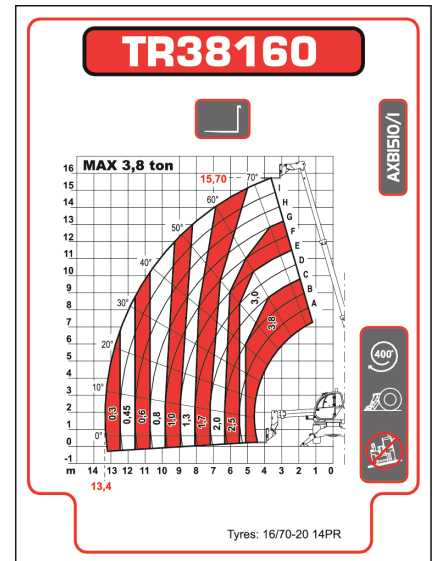
Engine oil	13.20 L
Fuel tank	180.00 L
Hydraulic reservoir	170.00 L

Environmental

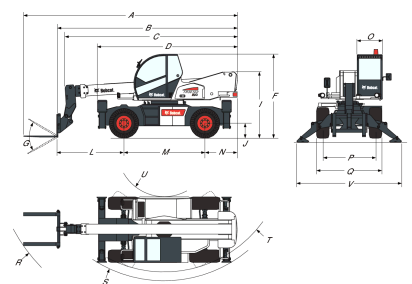
Operator noise level (LpA) (EN 12053)	103 dB(A)
Whole body vibration (EN 13059)	1.50 ms ⁻²
Hand-arm vibration (ISO 5349-1)	4.50 ms ⁻²

Load Charts

On stabilisers, with forks, 90°


Options

Custom colour	TÜV homologation
Windscreen grill	Under chassis protection
Anti-theft immobiliser	2-speed accelerator
Auto-cleaning air prefilter	adjustment for remote control
Centering handler and positive/negative jib pre-arrangement	Carriage with hydraulic attachment lock
Cold weather kit	Cold start
Remote control	Electronic accelerator adjustment on remote control
	Webasto heater (Cold weather kit is compulsory)

Dimensions


(A)	7699.0 mm	(N)	1175.0 mm
(B)	6575.0 mm	(O)	980.0 mm
(C)	6290.0 mm	(P)	1920.0 mm
(D)	5116.0 mm	(Q)	2380.0 mm
(F)	3000.0 mm	(R)	5265.0 mm
(G)	130.0°	(S)	4750.0 mm
(I)	2380.0 mm	(T)	4430.0 mm
(J)	510.0 mm	(U)	1700.0 mm
(L)	2430.0 mm	(V)	3968.0 mm
(M)	2950.0 mm		