

TR50-210 V Rotary Telescopic Handler

Telescopic Specifications

Performance

| | |
|--|-------------------------------|
| Rated capacity | 4,999 kg @ 500 mm Load Center |
| Max. lifting height (stabilisers fully extended) | 21 m |
| Capacity at max. height (stabilisers fully extended) | 2500 kg |
| Turret Rotation | 360° (Continuous) |
| Max. speed | 40.0 km/h |

Stabilisers

| | |
|----------------------|---|
| Type | Pivoting stabilisers |
| Stabilization system | Ground pressure detection. Automatic levelling. |

Weights

| | |
|------------------|----------|
| Weight (unladen) | 15900 kg |
|------------------|----------|

Engine

| | |
|-------------------------|-----------------------------|
| Make / Model | DEUTZ TCD 3.6 L4 |
| Compliance | stage V |
| Rated power (ISO 14396) | 100 kW (134 hp) @ 2,200 rpm |
| Maximum torque | 500 Nm @ 1,600 rpm |
| Number of cylinders | 4.0 |
| Displacement | 3.60 L |

Hydraulic System

| | |
|---------------------------------|--|
| Pump type | Load Sensing pump |
| Pump capacity | 105.00 L/min |
| Relief valve pressure setting | 350.00 bar |
| Control valve (boom and turret) | Electro-proportional with flow sharing |

Drive System

| | |
|--------------|---|
| Transmission | Hydrostatic with electronic regulation / 4 wheel drive |
| Main drive | Electronically controlled variable displacement pump. Variable displacement motor. 2-speed gear box |

Traction

| | |
|----------------|--------------|
| Standard tyres | 445/65 R22,5 |
| Towing force | 72.00 kN |
| Gradeability | 45.00 % |

Axles and brakes

| | |
|---------------|---|
| Axle type | Oil-immersed axles with planetary gears |
| Rear axle | Oscillating and steering with hydraulic locking |
| Front axle | Oscillating and steering with levelling +/-8° |
| Service brake | Hydraulically operated wet multi-disk brakes on each axle |
| Parking brake | Hydraulic with negative action |

Steering

| | |
|--------------------------------------|--|
| Steering modes | 3 steering modes with semi-automatic wheel realignment. 2 wheel steering / 4 wheel steering / Crab-steer |
| External turning radius (with forks) | 4 m |

Fluid Capacities

| | |
|---------------------|----------|
| Fuel tank | 175.00 L |
| Adblue | 10.00 L |
| Hydraulic reservoir | 165.00 L |

Environmental

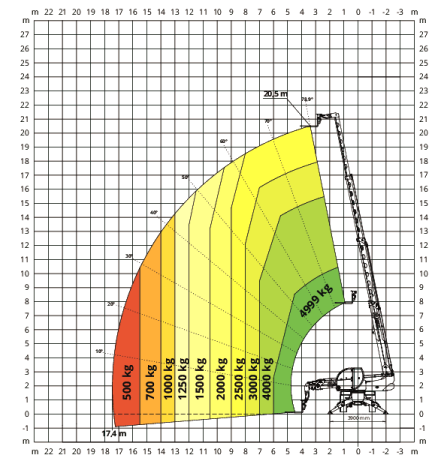
| | |
|---------------------------------------|-----------------------|
| Operator noise level (LpA) (En 12053) | 72 dB(A) |
| Level of acoustic power (LWA) | 106 dB(A) |
| Whole body vibration (ISO 2631-1): | 0.49 ms ⁻² |
| Hand-arm vibration (ISO 5349-1) | 0.57 ms ⁻² |

Standards

| | |
|---------------------|--|
| Standard compliance | EN 1459-2: slewing variable-reach trucks. EN 13000: hydraulic cranes. EN 280: mobile elevating work platforms. FOPS/ROPS cabin. EU 2016/1628: engine emissions |
|---------------------|--|

Load Chart

360° LOAD CHART
ON FULLY EXTENDED STABILISERS



Dimensions - mm

