

Performance

| | |
|--|------------|
| Lifting height — on stabilisers | 18700.0 mm |
| Lifting height — on tyres | 18400.0 mm |
| Rated capacity | 5000 kg |
| Capacity (at max. height on stabilisers) | 3000 kg |
| Capacity (at max. height on tyres) | 1500 kg |
| Capacity (at max. reach on stabilisers) | 600 kg |
| Capacity (at max. reach on tyres) | 300 kg |
| Max. reach on stabilisers | 16400.0 mm |
| Max. reach on tyres | 12500.0 mm |

Weights

| | |
|------------------|----------|
| Weight (unladen) | 16500 kg |
|------------------|----------|

Traction

| | |
|-----------------------|--------------------------|
| Standard tyres | 18 x 22.5 in, Heavy duty |
| 1st gear / low range | 10.0 km/h |
| 2nd gear / high range | 40.0 km/h |
| Gradeability | 21.8° |

Drive System

| | |
|--------------|---|
| Transmission | Hydrostatic with variable load sensing pump |
| Main drive | 2-speed gear box |

Engine

| | |
|----------------------------|----------------|
| Make / Model | FPT NEF Series |
| Fuel | Diesel |
| Cooling | Liquid |
| Rated power (ISO 14396) | 141.0 HP |
| Rated power (ISO 14396) | 105.0 kW |
| Maximum torque at 1400 RPM | 590.0 Nm |
| Number of cylinders | 4 |
| Displacement | 4.50 L |

Hydraulic System

| | |
|-------------------------------|------------------|
| Pump type | Double gear pump |
| Pump capacity | 135.00 L/min |
| Relief valve pressure setting | 230.00 bar |

Cycle Times

| | |
|--|--------|
| Telescope in time at max. reach - no load | 16.9 s |
| Telescope out time at max. reach - no load | 27.8 s |

Brakes

| | |
|-----------------------------|--|
| Engine braking | Hydrostatic |
| Parking and emergency brake | Negative brake with electro-hydraulic command on rear axle |

Fluid Capacities

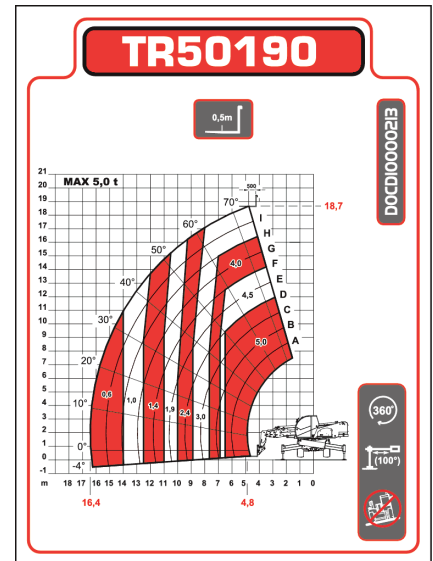
| | |
|---------------------|----------|
| Engine oil | 14.40 L |
| Fuel tank | 180.00 L |
| Hydraulic reservoir | 270.00 L |

Environmental

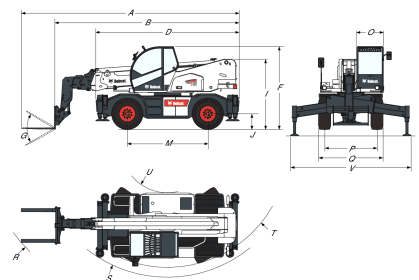
| | |
|---|-----------------------|
| Operator noise level (LpA) (EN 12053) | 75 dB(A) |
| Level of acoustic power (LWA) | 107 dB(A) |
| Whole body vibration (EN 13059) | 1.71 ms ⁻² |
| Whole body vibration uncertainty (EN 13059) | 0.18 ms ⁻² |
| Hand-arm vibration (ISO 5349-1) | 1.52 ms ⁻² |

Load Charts

On stabilisers, with forks, 90°


Options

| | |
|---|---|
| 180° turret rotation whilst driving kit | Digital camera on boom head with 7" monitor |
| Anti-theft immobiliser | Electronic accelerator adjustment on remote control |
| Auto-cleaning air prefilter | Integrated rear view system with 3.5" monitor |
| Carriage with hydraulic attachment lock | Remote control |
| Catalytic purifier muffler | Spare wheel |
| Centering handler and positive/negative jib pre-arrangement | TUV homologation |
| Cold start | Webasto heater (Cold weather kit is compulsory) |
| Cold weather kit | Windscreen grill |
| Custom colour | |

Dimensions


| | |
|---------------|---------------|
| (A) 7960.0 mm | (O) 980.0 mm |
| (B) 6760.0 mm | (P) 1920.0 mm |
| (D) 5290.0 mm | (Q) 2380.0 mm |
| (F) 3020.0 mm | (R) 6410.0 mm |
| (G) 115.0° | (S) 4790.0 mm |
| (I) 2556.0 mm | (T) 4430.0 mm |
| (J) 360.0 mm | (U) 1700.0 mm |
| (M) 2950.0 mm | (V) 4800.0 mm |