

**Performance**

|  |            |
|--|------------|
| Lifting height — on stabilisers          | 20500.0 mm |
| Lifting height — on tyres                | 20300.0 mm |
| Rated capacity                           | 5000 kg    |
| Capacity (at max. height on stabilisers) | 2500 kg    |
| Capacity (at max. height on tyres)       | 1400 kg    |
| Capacity (at max. reach on stabilisers)  | 600 kg     |
| Capacity (at max. reach on tyres)        | 200 kg     |
| Max. reach on stabilisers                | 18000.0 mm |
| Max. reach on tyres                      | 14000.0 mm |

**Weights**

|                  |          |
|------------------|----------|
| Weight (unladen) | 17540 kg |
|------------------|----------|

**Traction**

|                       |                          |
|-----------------------|--------------------------|
| Standard tyres        | 18 x 22.5 in, Heavy duty |
| 1st gear / low range  | 10.0 km/h                |
| 2nd gear / high range | 40.0 km/h                |
| Gradeability          | 21.8°                    |

**Drive System**

|              |   |
|--------------|---|
| Transmission | Hydrostatic with variable load sensing pump |
| Main drive   | 2-speed gear box                            |

**Engine**

|  |                |
|--|----------------|
| Make / Model                             | FPT NEF Series |
| Fuel                                     | Diesel         |
| Cooling                                  | Liquid         |
| Rated power (ISO 14396:2002) at 2200 RPM | 141.0 HP       |
| Rated power (ISO 14396:2002) at 2200 RPM | 105.0 kW       |
| Maximum torque at 1400 RPM               | 590.0 Nm       |
| Number of cylinders                      | 4              |
| Displacement                             | 4.50 L         |

**Hydraulic System**

|                               |                  |
|-------------------------------|------------------|
| Pump type                     | Double gear pump |
| Pump capacity                 | 135.00 L/min     |
| Relief valve pressure setting | 230.00 bar       |

**Cycle Times**

|  |        |
|--|--------|
| Telescope in time at max. reach - no load  | 17.2 s |
| Telescope out time at max. reach - no load | 31.2 s |

**Brakes**

|                             |  |
|-----------------------------|--|
| Engine braking              | Hydrostatic  |
| Parking and emergency brake | Negative brake with electro-hydraulic command on rear axle |

**Fluid Capacities**

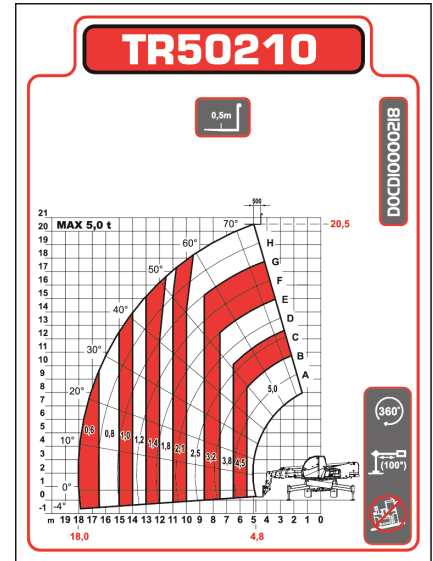
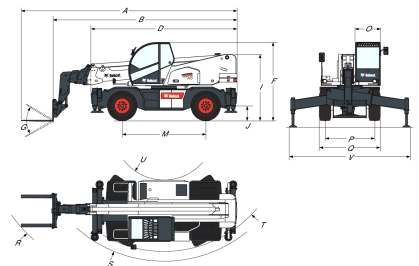
|                     |          |
|---------------------|----------|
| Engine oil          | 14.40 L  |
| Fuel tank           | 180.00 L |
| Hydraulic reservoir | 270.00 L |

**Environmental**

|   |                       |
|---|-----------------------|
| Operator noise level (LpA) (EN 12053)       | 77 dB(A)              |
| Level of acoustic power (LWA)               | 107 dB(A)             |
| Whole body vibration (EN 13059)             | 1.20 ms <sup>-2</sup> |
| Whole body vibration uncertainty (EN 13059) | 0.12 ms <sup>-2</sup> |
| Hand-arm vibration (ISO 5349-1)             | 1.10 ms <sup>-2</sup> |

**Load Charts**

On stabilisers, with forks, 90°


**Dimensions**


|     |           |     |           |
|-----|-----------|-----|-----------|
| (A) | 8350.0 mm | (O) | 980.0 mm  |
| (B) | 7150.0 mm | (P) | 1920.0 mm |
| (D) | 5290.0 mm | (Q) | 2380.0 mm |
| (F) | 3025.0 mm | (R) | 6789.0 mm |
| (G) | 115.0°    | (S) | 4790.0 mm |
| (I) | 2556.0 mm | (T) | 4430.0 mm |
| (J) | 360.0 mm  | (U) | 1700.0 mm |
| (M) | 2950.0 mm | (V) | 5070.0 mm |