

# TR60-250 IIIA Rotary Telescopic Handler

## Telescopic Specifications

### Performance

Rated capacity	6,000 kg @ 600 mm Load Center
Max. lifting height (stabilisers fully extended)	25 m
Capacity at max. height (stabilisers fully extended)	2200 kg
Turret Rotation	360° (Continuous)
Max. speed	40.0 km/h

### Stabilisers

Type	Telescopic scissors
Stabilization system	Ground pressure detection. Automatic levelling. Lifting capacity adjusted in proportion to stabiliser extension

### Weights

Weight (unladen)	18000 kg
------------------	----------

### Engine

Make / Model	DEUTZ TCD 3.6 L4 EDG
Compliance	stage IIIA
Rated power (ISO 14396)	100 kW (134 hp) @ 2,200 rpm
Maximum torque	500 Nm @ 1,600 rpm
Number of cylinders	4.0
Displacement	3.60 L

### Hydraulic System

Pump type	Load Sensing pump
Pump capacity	105.00 L/min
Relief valve pressure setting	350.00 bar
Control valve (boom and turret)	Electro-proportional with flow sharing

### Drive System

Transmission	Hydrostatic with electronic regulation / 4 wheel drive
Main drive	Electronically controlled variable displacement pump. Variable displacement motor. 2-speed gear box

### Traction

Standard tyres	445/65 R22,5
Towing force	72.00 kN
Gradeability	41.00 %

### Axles and brakes

Axle type	Oil-immersed axles with planetary gears
Rear axle	Oscillating and steering with hydraulic locking
Front axle	Oscillating and steering with levelling +/-8°
Service brake	Hydraulically operated wet multi-disk brakes on each axle
Parking brake	Hydraulic with negative action

### Steering

Steering modes	3 steering modes with semi-automatic wheel realignment. 2 wheel steering / 4 wheel steering / Crab-steer
External turning radius (with forks)	4 m

### Fluid Capacities

Fuel tank	175.00 L
Hydraulic reservoir	165.00 L

### Environmental

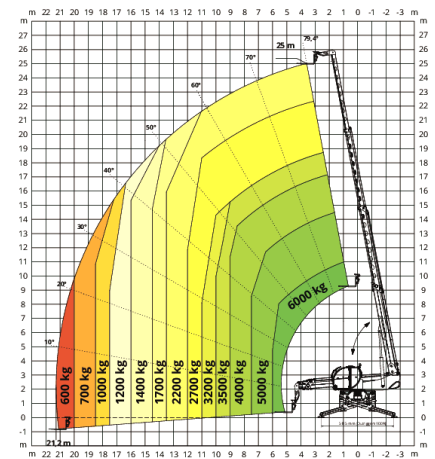
Operator noise level (LpA) (En 12053)	72 dB(A)
Level of acoustic power (LWA)	106 dB(A)
Whole body vibration (ISO 2631-1):	0.49 ms <sup>-2</sup>
Hand-arm vibration (ISO 5349-1)	0.57 ms <sup>-2</sup>

### Standards

Standard compliance	EN 1459-2: slewing variable-reach trucks. EN 13000: hydraulic cranes. EN 280: mobile elevating work platforms. FOPS/ROPS cabin
---------------------	--

### Load Chart

360° LOAD CHART  
ON FULLY EXTENDED STABILISERS



### Dimensions - mm

