

# TR60-300 V Rotary Telescopic Handler

## Telescopic Specifications

### Performance

|  |                               |
|--|-------------------------------|
| Rated capacity                                       | 6,000 kg @ 600 mm Load Center |
| Max. lifting height (stabilisers fully extended)     | 30 m                          |
| Capacity at max. height (stabilisers fully extended) | 2500 kg                       |
| Turret Rotation                                      | 360° (Continuous)             |
| Max. speed   | 40.0 km/h                     |

### Stabilisers

|                      |   |
|----------------------|---|
| Type                 | Telescopic scissors   |
| Stabilization system | Ground pressure detection. Automatic levelling. Lifting capacity adjusted in proportion to stabiliser extension |

### Weights

|                  |          |
|------------------|----------|
| Weight (unladen) | 21800 kg |
|------------------|----------|

### Engine

|                         |                             |
|-------------------------|-----------------------------|
| Make / Model            | Volvo TAD 582 VE            |
| Compliance              | Stage V                     |
| Rated power (ISO 14396) | 160 kW (218 hp) @ 2,300 rpm |
| Maximum torque          | 925 Nm @ 1,380 rpm          |
| Number of cylinders     | 4.0                         |
| Displacement            | 5.13 L                      |

### Hydraulic System

|                                 |  |
|---------------------------------|--|
| Pump type                       | Load Sensing pump                      |
| Pump capacity                   | 124.00 L/min                           |
| Relief valve pressure setting   | 350.00 bar                             |
| Control valve (boom and turret) | Electro-proportional with flow sharing |

### Drive System

|              |  |
|--------------|--|
| Transmission | Hydrostatic with electronic regulation / 4 wheel drive   |
| Main drive   | Electronically controlled variable displacement pump.<br>Variable displacement motor. 2-speed gear box |

### Traction

|                |              |
|----------------|--------------|
| Standard tyres | 445/65 R22,5 |
| Towing force   | 95.00 kN     |
| Gradeability   | 44.00 %      |

### Axles and brakes

|               |   |
|---------------|---|
| Axle type     | Oil-immersed axles with planetary gears                   |
| Rear axle     | Oscillating and steering with hydraulic locking           |
| Front axle    | Oscillating and steering with levelling +/-8°             |
| Service brake | Hydraulically operated wet multi-disk brakes on each axle |
| Parking brake | Hydraulic with negative action                            |

### Steering

|                                      |   |
|--------------------------------------|---|
| Steering modes                       | 3 steering modes with semi-automatic wheel realignment.<br>2 wheel steering / 4 wheel steering / Crab-steer |
| External turning radius (with forks) | 4 m   |

### Fluid Capacities

|                     |          |
|---------------------|----------|
| Fuel tank           | 270.00 L |
| Adblue              | 40.00 L  |
| Hydraulic reservoir | 195.00 L |

### Environmental

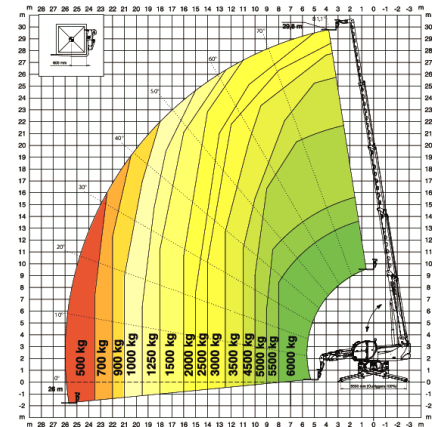
|                                       |                       |
|---------------------------------------|-----------------------|
| Operator noise level (LpA) (En 12053) | 73 dB(A)              |
| Level of acoustic power (LWA)         | 108 dB(A)             |
| Whole body vibration (ISO 2631-1):    | 0.62 ms <sup>-2</sup> |
| Hand-arm vibration (ISO 5349-1)       | 0.52 ms <sup>-2</sup> |

### Standards

|                     |  |
|---------------------|--|
| Standard compliance | EN 1459-2: slewing variable-reach trucks. EN 13000: hydraulic cranes. EN 280: mobile elevating work platforms. FOPS/ROPS cabin. EU 2016/1628: engine emissions |
|---------------------|--|

### Load Chart

360° LOAD CHART  
ON FULLY EXTENDED STABILISERS



### Dimensions - mm

